



iBus

Peng Huang <phuang@redhat.com>

I18N Team

19 Oct 2008

What is iBus?

- iBus (Intelligent Input Bus) is the next generation input framework for GNU Linux/Unix.
- Project host: <http://code.google.com/p/ibus>
- Code repository: <http://github.com/phuang>

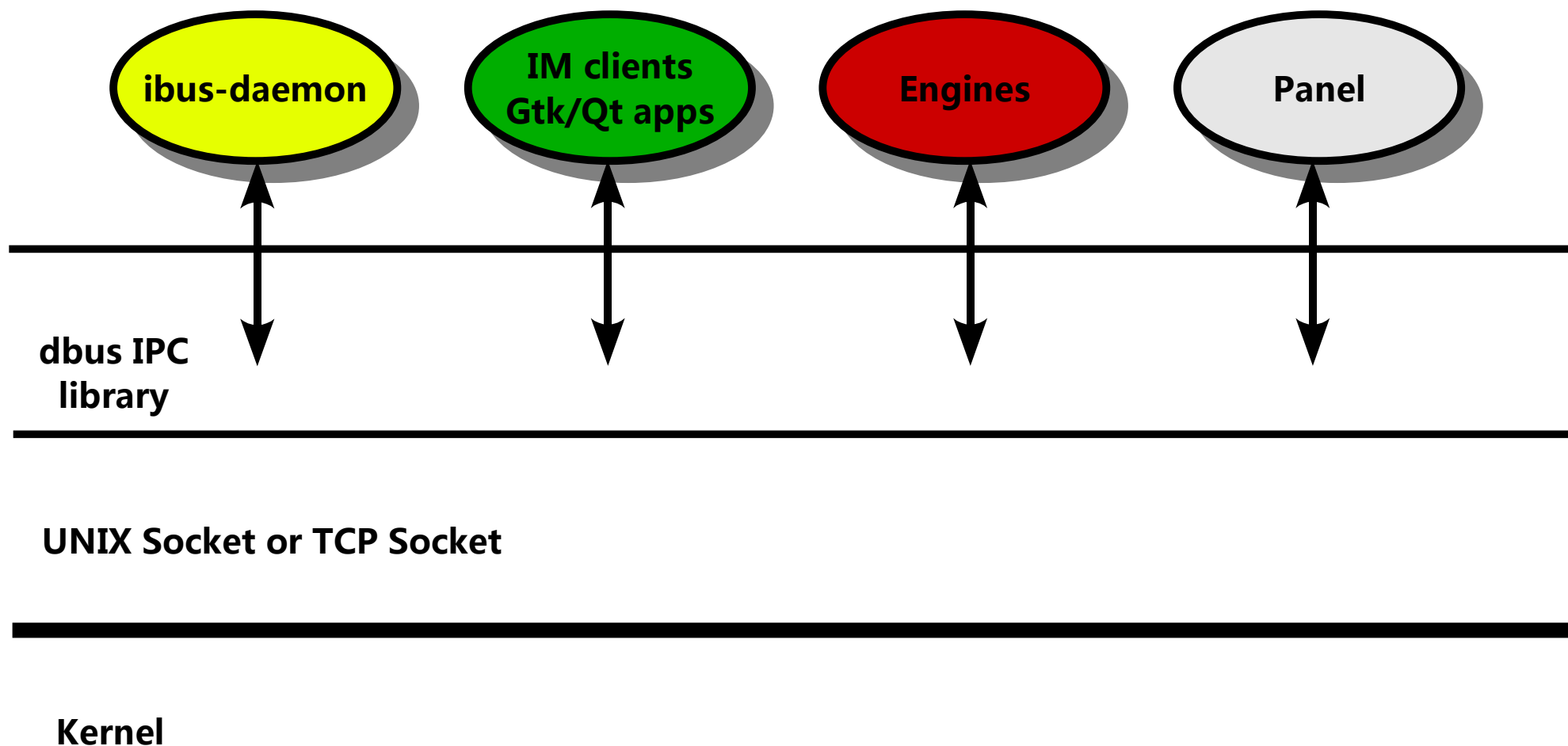
Team members & contributors

- Huang Peng <shawn.p.huang@gmail.com>
- 余钰炜 <acevery@gmail.com>
- Yong Sun <findsun@gmail.com>
- Choe Hwanjin <choe.hwanjin@gmail.com>
- UTUMI Hiroshi <utuhiro78@yahoo.co.jp>
- Ryo Dairiki <ryo-dairiki@users.sourceforge.net>

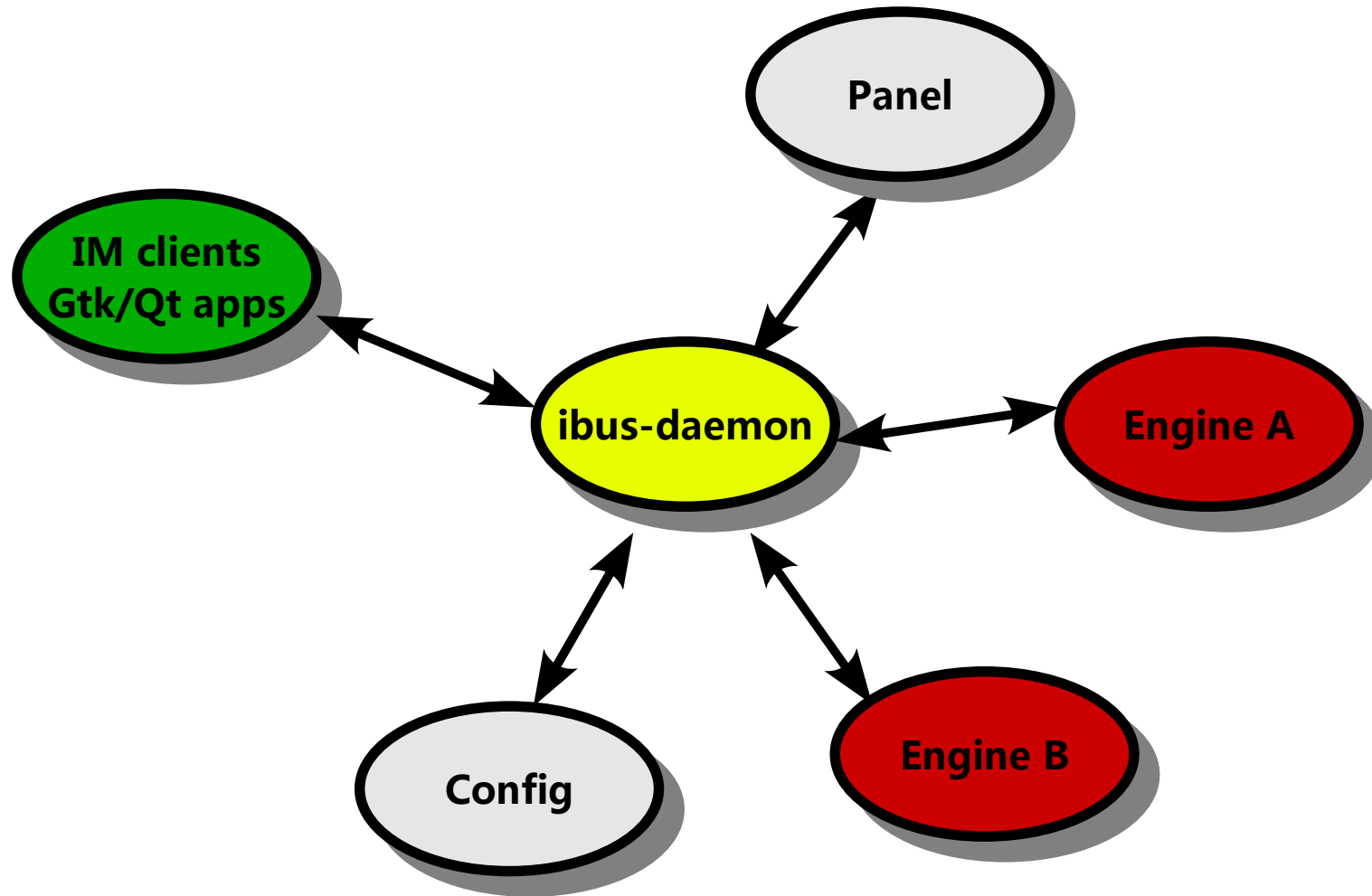
Architecture

- iBus is CS structure.
 - It has an ibus-daemon. It manages all clients.
 - All engines, panel, config modules & clients are clients of ibus-daemon.
- iBus is base on dbus IPC protocol.

Architecture (cont)



Architecture (cont)



Advantage of iBus

- iBus uses dbus RPC for communication.
 - Clients can use any languages to communicate with ibus.
 - Engines can be wrote by any languages
 -
- The daemon, engines, clients & UI, all partitions are running in separated processes.
 - One of them has problem, it will not impact all system.
 - All partitions can be restarted on the fly.
 - Engine can be loaded & unloaded on daemon.

Advantage of iBus (cont)

- iBus can be start & stop smoothly (like a normal application)
- iBus supports themed UI. The UI will more beautiful & more easy to use.

iBus status

- **ibus-core**
 - It has about 12000 lines of code.
 - ibus-daemon - 100%
 - panel - 100%
 - config module – 100%
 - Gtk2 front end – 100%
 - Qt4 front end – 100%
 - XIM front end - 100%
 - Text console front end - 00%
 - setup UI – 100%

iBus status (cont)

- ibus-m17n engine 100%
- ibus-pinyin engine 100%
- ibus-anthy engine 100%
- ibus-table engine 100%
- ibus-chewing engine 100%
- ibus-hangul engine 100%

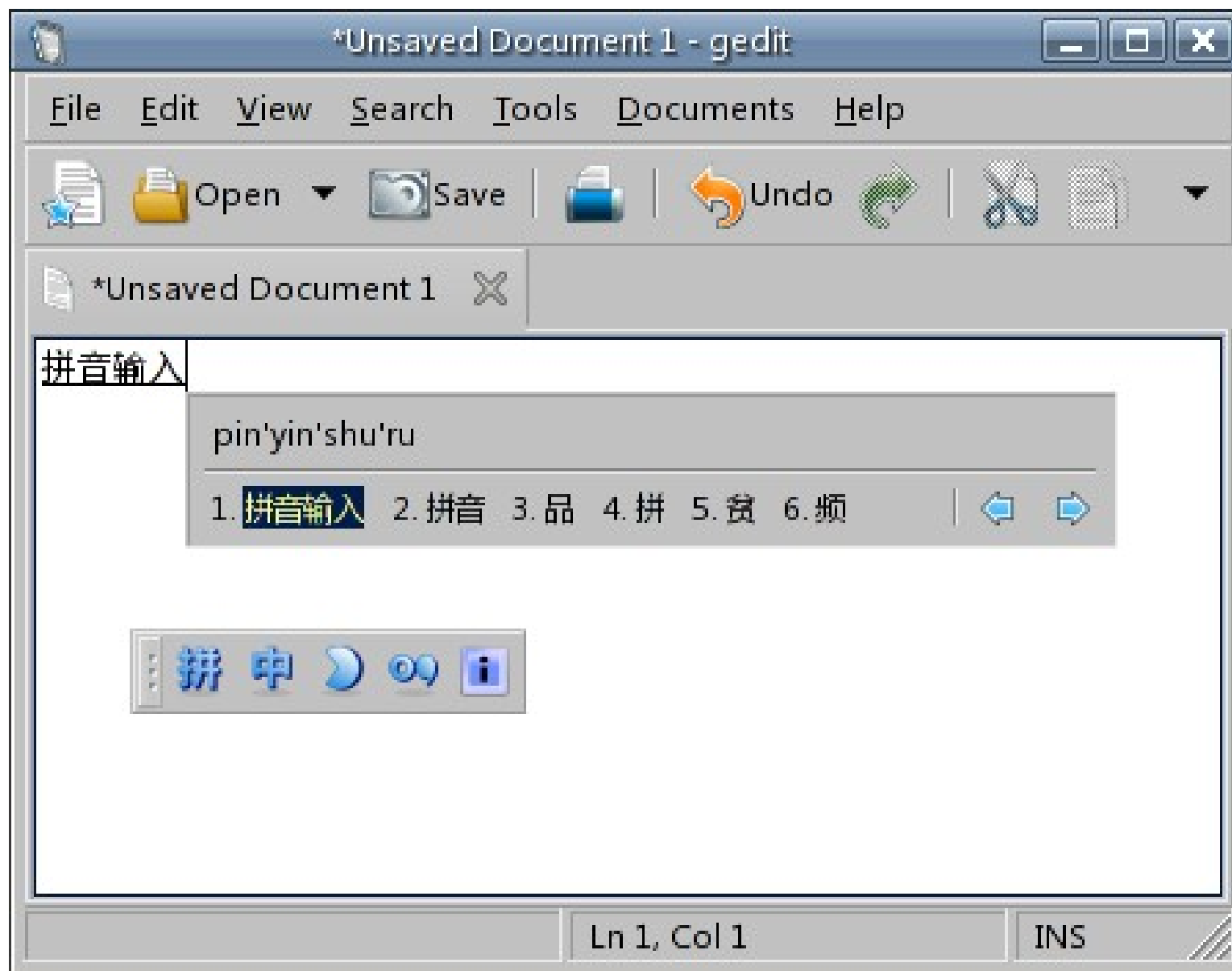
iBus in Linux distributions

- Fedora 9 and later have included ibus and all engines
- Some developers have packaged ibus and engines for ArchLinux, Gentoo, Ubuntu, Debian and OpenSUSE
- Ubuntu's developers told me, they are considering use ibus as default platform

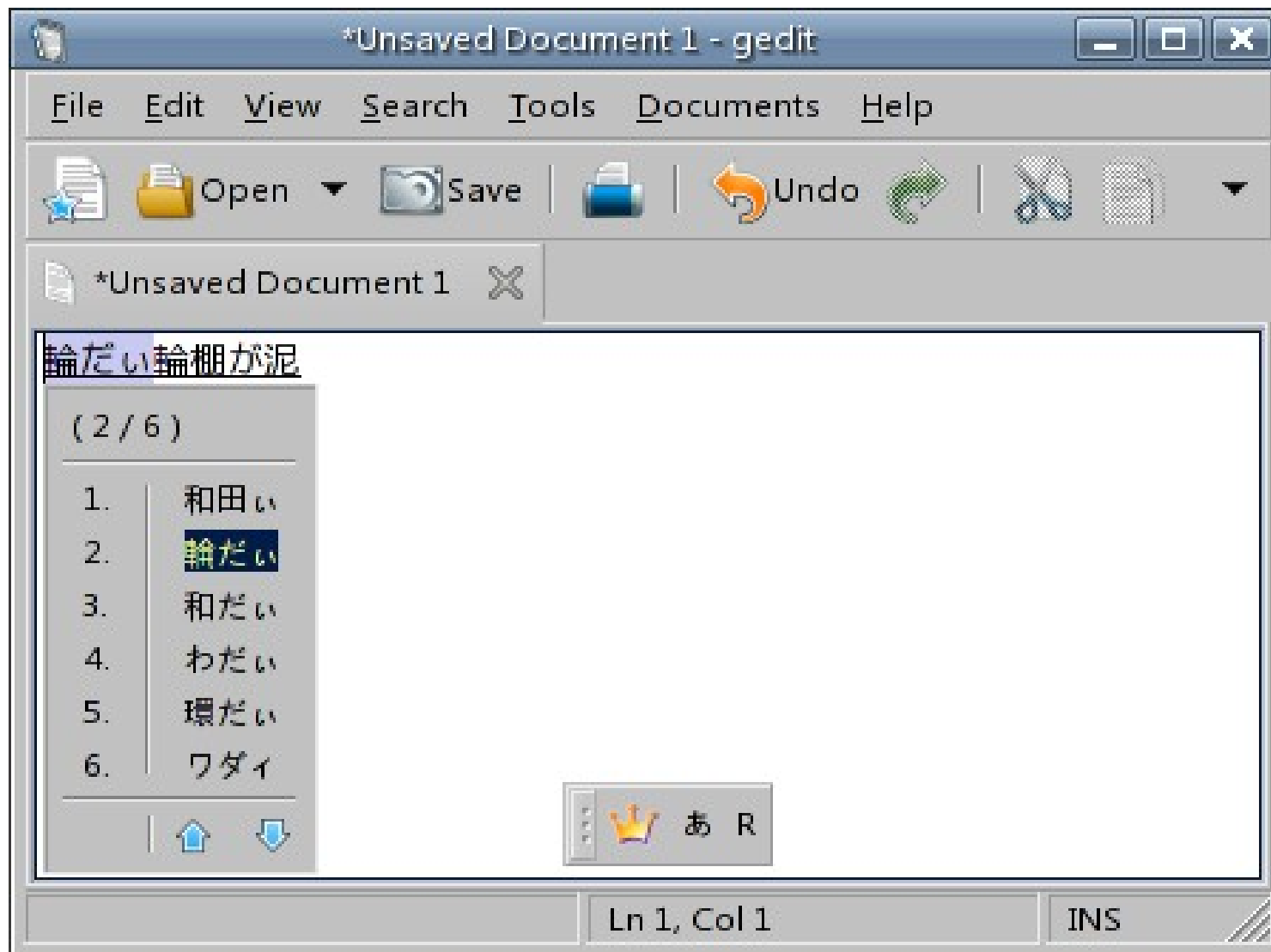
Future of iBus

- **Short term tasks**
 - Make iBus more stable and release the first stable version
 - Improve usability of iBus
 - Write guide document for users
 - Write API specification
- **Long term goals**
 - Use C language re-implement ibus-daemon
 - Port ibus to MAC OSX, Open Solaris and Windows

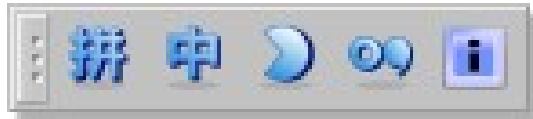
Screen shots – Chinese PinYin



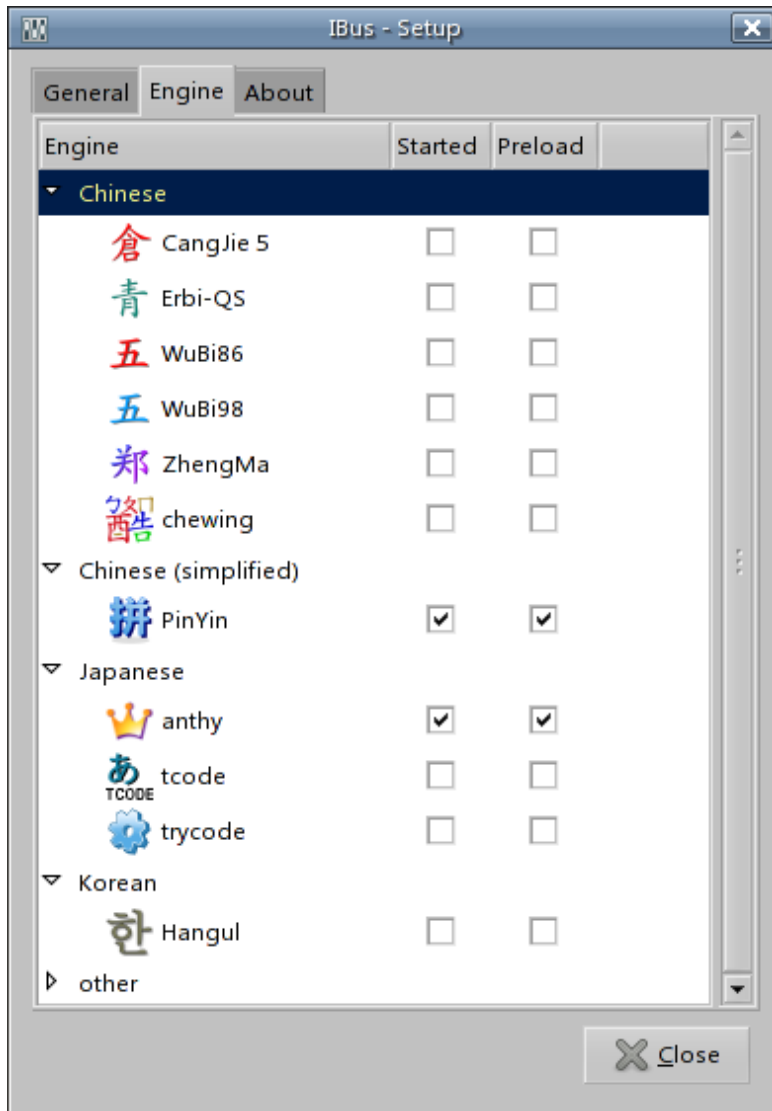
Screen shots – Japanese Anthy



Screen shots – themes

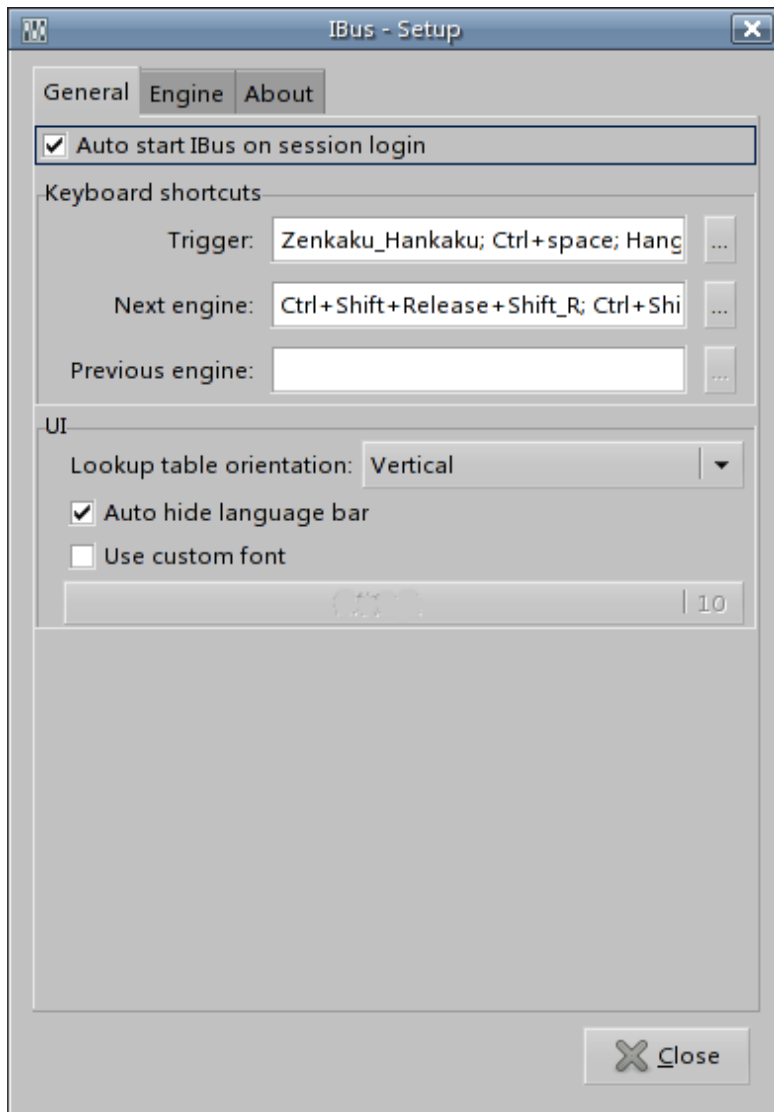


Screen shots – engines setup



- Engines can be load dynamically
- Click the check box to load or unload engine.

Screen shots - iBus setup



Any questions?

Thanks